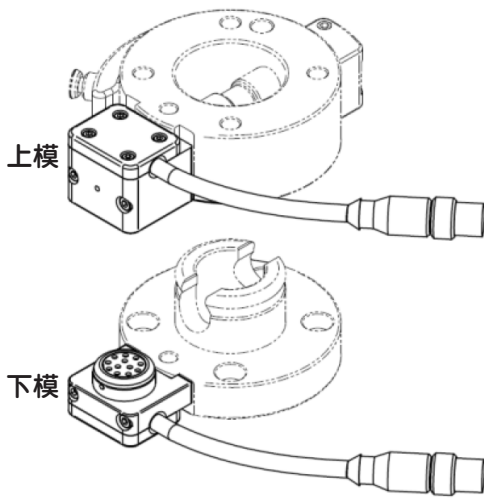


## SEK 系列

SEK100  
SEK125  
SEK160

Swivel  
&  
Energy  
Coupling

氣壓  
旋轉接頭  
&  
氣/電  
快速連接器



### SEK 電氣換模連接器

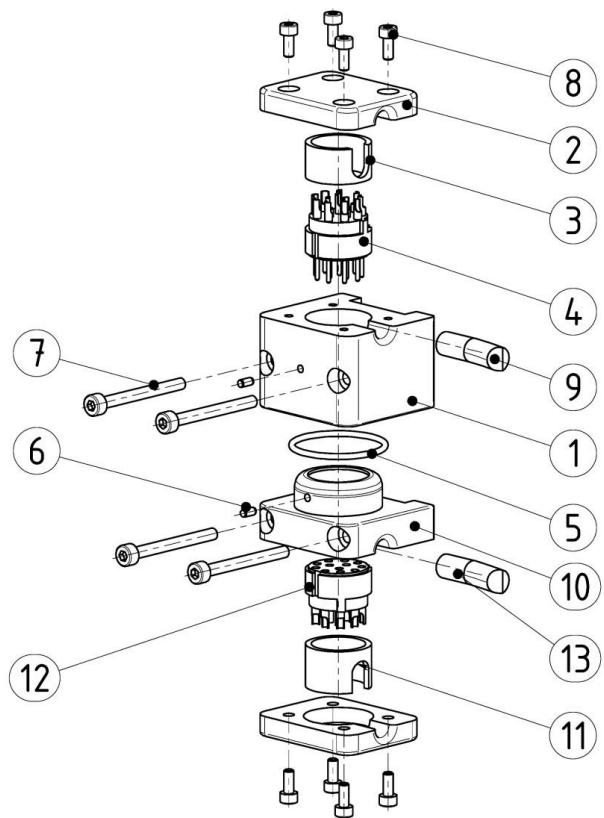
#### Feed Regulation-Electric-Coupling

- 規格：3種
- SEK通過換模系統的機械連接自動耦合。
- 5,000次更換週期壽命
- 替換其他連接器
- 2D&3D提供
- 可以直接使用在自己設計的設備上

Pos.	Description	Quantity
1	Upper part 1E	1
2	Cap	2
3	Distance bush upper part	1
4	Insulating body with pins	1
5	O-Ring	1
6	cylindrical pin	1
7	Erection screw	4
8	Screw for Cap	8
9	Cable on the robot side	1
10	Lower part 1E	1
11	Distance bush lower part	1
12	Insulating body with bushings	1
13	Cable on the gripper side	1

#### 8.1 Spare and wear parts

Pos.	Description	Stock-No.	Quantity
4	Insulating body with pins	EG-MEK-IKS12	1
5	O-Ring	EG-SEK-OR..x.	1
12	Insulating body with bushings	EG-SEK-IK12	1



◎ 目錄上所有的功能尺寸及公差僅供參考，本公司保有變更之權力並不事先通知。◎ 請有任何疑問及特殊需求請洽詢本公司。

版权所有：上海韻耀氣動科技有限公司 021-6819 8501~2 E-mail: info@acedanyao.com

# SEK 電氣換模快速連接器

## Feed Regulation-Electric-Coupling



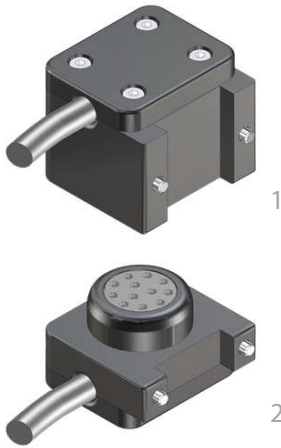
SEK  
系列

SEK100

SEK125  
SEK160

Swivel  
&  
Energy  
-Coupling

氣壓  
旋轉接頭  
&  
氣/電  
快速連接器



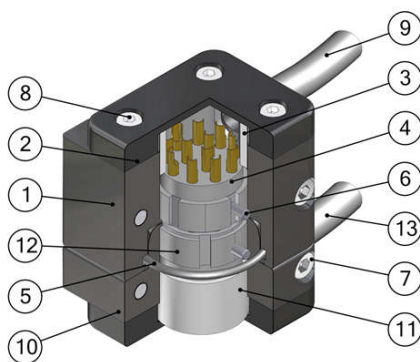
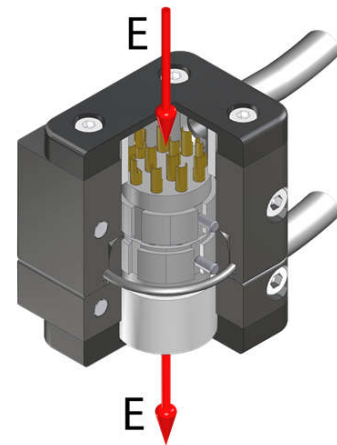
### Operating mode:

The SEK-upper part is mounted on the SHW-lower part. The SEK-lower part appropriate on the SHW-lower part. The SEK is coupled automatically by the mechanical connection of the exchange system.

### Advantages:

- Mechanical and electric connections are established simultaneously.
- holds up to 50.000 changing cycles
- individual wiring
- Coding of the interchange parts

Technical specifications		SEK100
Basic material		Al, anod.
Consistent with		SHW 063, 080, 100
Width x depth x height [mm]		34 x 32 x 29,5
Signal ducts nE		12
Rated current [A]		9
Rated voltage [V]		63
Contact resistance [mΩ]		3
Contact durability		50.000
Mass [kg]	Upper part	0,07
	Lower part	0,045



Pos.	Bezeichnung
1	Upper part 1E
2	Cap
3	Distance bush upper part
4	Insulating body with pins
5	O-Ring
6	Cylindrical pin
7	Mounting screw
8	Screw for Cap
9	Cable on the robot side
10	Lower part 1E
11	Distance bush lower part
12	Insulating body with bushing:
13	Cable on gripper side

### Feed Regulator-Electric-Coupling Ø100...

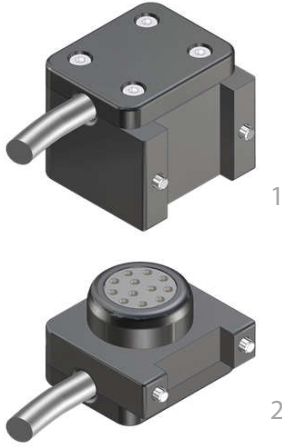
G-SEK100-O-1E12-300-M12	upper part, electrical plug, 12-pole, Cable L=300mm, plug M12x1-12 pole
G-SEK100-U-1E12-300-M12	lower part, electrical plug, 12-pole, Cable L=300mm, plug M12x1-12 pole

## SEK 系列

SEK100  
SEK125  
SEK160

Swivel  
&  
Energy  
Coupling

氣壓  
旋轉接頭  
&  
氣/電  
快速連接器



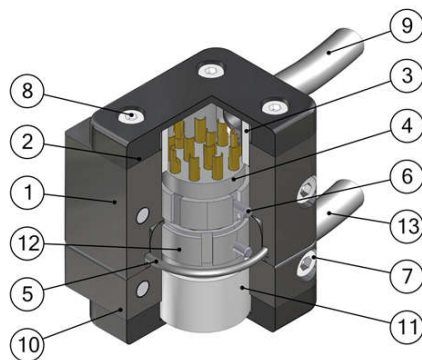
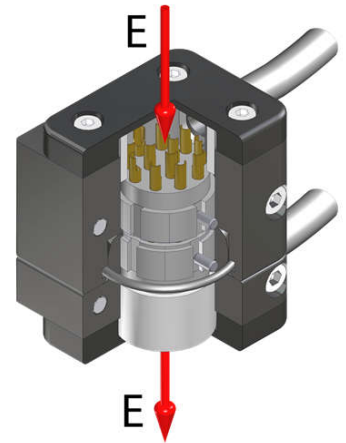
#### Operating mode:

The SEK-upper part is mounted on the SHW-lower part. The SEK-lower part appropriate on the SHW-lower part. The SEK is coupled automatically by the mechanical connection of the exchange system.

#### Advantages:

Mechanical and electric connections are established simultaneously.  
holds up to 50.000 changing cycles  
individual wiring  
Coding of the interchangeable parts

Technical specifications		SEK125
Basic material		Al, anod.
Consistent with		<b>SHW125</b>
Width x depth x height [mm]		44 x 32 x 29,5
Signal ducts nE		12
Rated current [A]		9
Rated voltage [V]		63
Contact resistance [mΩ]		3
Contact durability		50.000
Mass [kg]	Upper part	0,095
	Lower part	0,057



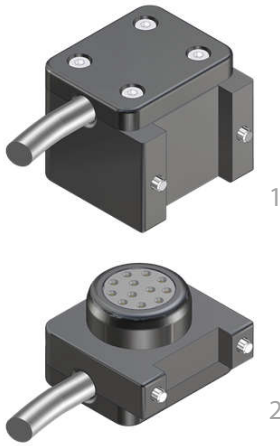
Pos.	Bezeichnung
1	Upper part 1E
2	Cap
3	Distance bush upper part
4	Insulating body with pins
5	O-Ring
6	Cylindrical pin
7	Mounting screw
8	Screw for Cap
9	Cable on the robot side
10	Lower part 1E
11	Distance bush lower part
12	Insulating body with bushing
13	Cable on gripper side

#### Feed Regulator-Electric-Coupling Ø100...

G-SEK125-O-1E12-300-M12	upper part, electrical plug, 12-pole, Cable L=300mm, plug M12x1-12 pole
G-SEK125-U-1E12-300-M12	lower part, electrical plug, 12-pole, Cable L=300mm, plug M12x1-12 pole

# SEK 電氣換模快速連接器

## Feed Regulation-Electric-Coupling



### Operating mode:

The SEK-upper part is mounted on the SHW-lower part. The SEK-lower part appropriate on the SHW-lower part. The SEK is coupled automatically by the mechanical connection of the exchange system.

### Advantages:

- Mechanical and electric connections are established simultaneously.
- holds up to 50.000 changing cycles
- individual wiring
- Coding of the interchange parts

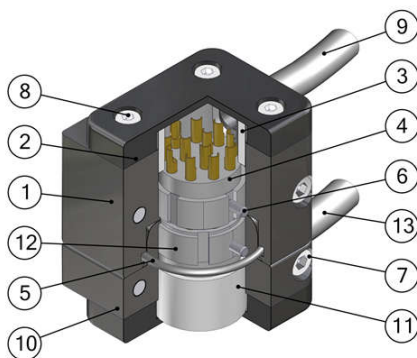
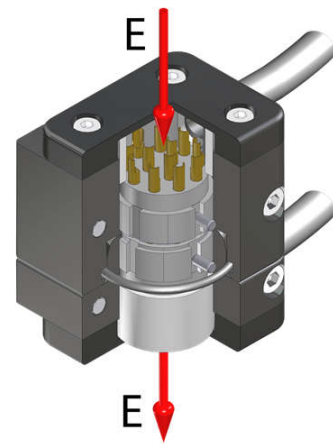
## SEK 系列

SEK100  
SEK125  
**SEK160**

Swivel  
&  
Energy  
-Coupling

氣壓  
旋轉接頭  
&  
氣/電  
快速連接器

Technical specifications		SEK160
Basic material		Al, anod.
Consistent with		<b>SHW160</b>
Width x depth x height [mm]		50 x 34 x 31,5
Signal ducts nE		12
Rated current [A]		9
Rated voltage [V]		63
Contact resistance [mΩ]		3
Contact durability		50.000
Mass [kg]	Upper part	0,12
	Lower part	0,083



Pos.	Bezeichnung
1	Upper part 1E
2	Cap
3	Distance bush upper part
4	Insulating body with pins
5	O-Ring
6	Cylindrical pin
7	Mounting screw
8	Screw for Cap
9	Cable on the robot side
10	Lower part 1E
11	Distance bush lower part
12	Insulating body with bushing
13	Cable on gripper side

### Feed Regulator-Electric-Coupling Ø100...

G-SEK160-O-1E12-300-M12	upper part, electrical plug, 12-pole, Cable L=300mm, plug M12x1-12 pole
G-SEK160-U-1E12-300-M12	lower part, electrical plug, 12-pole, Cable L=300mm, plug M12x1-12 pole